



  
**[www.onivo.ca](http://www.onivo.ca)**

**2019**

**A**

Single Walled - Stainless Steel

DRINKWARE



Silver      Black      Lime Green



Royal Blue      Purple



Red      White

WB4833

500 ml. Water Bottle with Carabiner

2.875" Diameter x 7.5" H

Stainless Steel bottle holds up to 500 ml. (17 oz.). This includes a matching coloured carabiner with black twist-off cap (except white-silver carabiner).

100	250	500	1000	
7.76	6.47	5.65	5.43	AB2C



Black      Silver



Lime Green      Red



Royal Blue      Purple

MATTE  
Glitter  
FINISH

WB9833

Shynberry 500 ml. Bottle

2.875" Diameter x 7.5" H

This bottle is styled just like our popular WB4833 bottle with a glitter matte exterior finish. It is Stainless Steel, holds up to 500 ml. (17 oz.), has a black twist PP lid and a carabiner that matches the body colour.

100	250	500	1000	
7.72	6.45	5.65	5.43	AB2C



Black      Cream      Army Green      Lime Green



Purple      Red      Silver



Matte  
METALLIC  
Finish

WB7075

Wide Mouth 500 ml. Water Bottle

2.75" Diameter x 8.75" H

Large wide mouth opening makes for easy drinking with this Stainless Steel bottle. Includes plastic twist-off cap, except silver and cream (black cap) with silver carabiner. Holds up to 500 ml. (17 oz.).

100	250	500	1000	
8.82	7.40	6.48	6.23	AB2C



# DRINKWARE

## Single Walled - Stainless Steel

### WB9940

Gatriabelle 750 ml. Bottle

3" Diameter x 9.5" H

Customize this Stainless Steel bottle with your company or sports team logo. It holds up to 750 ml. (25 oz.) and has a matching coloured carabiner with key ring. Same styling as our WB3940 bottle, but in a matte finish.

50	250	500	1000	
10.12	8.04	7.03	6.77	AB2C



**MATTE  
Finish**

Red



Silver



Royal Blue



Lime Green



Black



### WB3940

750 ml. Water Bottle

3" Diameter x 9.5" H

This 18/8 Stainless Steel with 0.4mm single wall bottle holds up to 750 ml. (25 oz.). Includes black plastic screw cap with carabiner.

50	250	500	1000	
10.62	8.47	7.43	7.15	AB2C



**18/8  
STAINLESS  
steel**



Black



Purple



Lime Green



Royal Blue



Red



Silver



White

### WB8162

Mix N' Match 750 ml. Bottle

2.75" Diameter x 10" H

Flip the top opening on this ABS screw on/off lid to get to the drinking spout. This Stainless Steel bottle has a wide mouth opening and holds up to 750 ml. (25 oz.). Mix and match bottle and lid colours.

50	250	500	1000	
13.24	10.74	9.43	9.08	AB2C



**MIX  
N' MATCH  
bottle & lid  
COLOURS**



Royal Blue



Lime Green



Orange



Purple



Red



Smoke



Clear



White Bottle



Silver Bottle



Black Bottle

Single Walled - Stainless Steel

DRINKWARE



Black Copper Lime Green Orange



Red Silver White



Royal Blue



Black Lime Green Red Purple Royal Blue

MATTE  
Glitter  
FINISH



Silver



Black Royal Blue



White Wood



Silver



Red

SINGLE  
Walled

DRINKWARE

new

WB9639

Balada 750 ml. Bottle

2.5" Diameter x 8.5" H

The exterior of this bottle has a barrel design with a glossy finish. It is single walled and holds up to 750 ml. (25 oz.). The Stainless Steel lid screws on/off. For use with your chosen cold beverage.

50	250	500	1000	
13.24	10.74	9.43	9.08	AB2C



WB9438

Tango 750 ml. Bottle

2.75" Diameter x 10" H

This bottle is single walled with a matte finish and is for use with cold beverages. It holds up to 750 ml. (25 oz.) and is made from Stainless Steel. The lid is Acrylic with a built-in ring handle.

50	250	500	1000	
13.38	10.85	9.53	9.17	AB2C



WB7030

Single Rockit 700 ml. Bottle

2.75" Diameter x 10" H

This 18/8 Stainless Steel bottle is single walled with a matte finish. It holds up to 700 ml. (23.5 oz.) and has a screw-on silver coloured lid. For cold beverages only.

Colours				
50	250	500	1000	
14.62	11.93	10.47	10.07	AB2C

Wood				
50	250	500	1000	
17.20	14.16	12.45	11.98	AB2C





# DRINKWARE

## Double Walled - Stainless Steel

new

### WB9508

Skyrize 250 ml. Mini Slim Bottle

1.875" Diameter x 8.5" H

Sleek and sexy; this bottle's goal is to make you look fresh while sipping your favourite hot or cold beverage. Its slim design fits easily into your designer hand bag or laptop messenger bag. Made with durable Stainless Steel and double walled vacuum insulation it keeps your beverage hot or cold for up to 10 hours. Holds up to 250 ml. (8 oz.). Individually retail packaged.

50	250	500	1000
18.12	14.96	13.15	12.65
AB2C			



Light Blue



White



Many bottles individually retail packaged as shown



Red



Black



Mint Green



Royal Blue

### WB1030

Rockit Top 500 ml. Bottle

2.75" Diameter x 10" H

Another addition to our Rockit line of bottles now featuring coloured matte finish lids. This one is exactly the same as WB9030 with a black matte finish, double walled, Stainless Steel body and inner Copper insulated liner. Use for hot and cold beverages. Holds up to 500 ml. (17 oz.). Stays hot up to 12 hours! Individually retail packaged.

50	250	500	1000
19.74	16.36	14.38	13.83
AB2C			



Black



Lime Green



Royal Blue



White



Red



Purple



Orange

new

### WB6030

Rockit Shimmer 500 ml. Bottle

2.75" Diameter x 10" H

Use this double walled, Stainless Steel with matte glitter finish Rockit bottle for your hot or cold beverages. Keeps your beverage hot for up to 12 hours. It has an inner Copper insulated liner and a Stainless Steel leak proof lid. Holds up to 500 ml. (17 oz.). Individually retail packaged.

50	250	500	1000
19.74	16.36	14.38	13.83
AB2C			



METALLIC  
Coated



Royal Blue



Silver



Red



Purple



Lime Green

## Double Walled - Stainless Steel



Black



Lime Green



Purple



Orange



Red



Royal Blue



White



Black



Lime Green



Red



White



Black/Copper



Wood Matte



Royal Blue



Silver



Stone Grey Matte



Copper



Royal Blue



Black



Red



White



Powder  
**COATED**  
**MATTE**  
Finish

## DRINKWARE

### WB8030

Rockit Shine 500 ml. Bottle

2.75" Diameter x 10" H

Use this Stainless Steel double walled bottle with vacuum insulation to keep hot beverages hot and cold beverages cold longer. It is made from Stainless Steel and has an inner Copper insulated liner. All bottles have a glossy exterior and a matching coloured screw on leakproof lid. Holds up to 500 ml. (17 oz.). Individually retail packaged. Stays hot up to 12 hours!

50	250	500	1000	
19.74	16.36	14.38	13.83	AB2C



### LD2030

Dome Lid

100	250	500	1000	
1.90	1.73	1.08	1.08	AB2C

Add a custom decorated four colour process dome decal to your WB3030, WB8030, WB9030 and WB6030 Rockit bottles. Give your bottle a unique look!

Custom four colour process LD2030 dome decals for WB8030, WB6030, WB3030 and WB9030 bottle lids. See website for details.

### WB9030

Rockit BPM 500 ml. Bottle

2.75" Diameter x 10" H

Keep hot beverages hot and cold beverages cold longer with this sturdy double walled 18/8 Stainless Steel bottle with inner Copper insulated liner that holds up to 500 ml. (17 oz.). Keep these bottles with trendy new designs at home, the office, in your gym bag and in the car. Individually retail packaged. Stays hot up to 12 hours!

Colours

50	250	500	1000	
19.74	16.36	14.38	13.83	AB2C

Wood Matte, Stone Grey Matte

50	250	500	1000	
21.44	17.84	15.68	15.08	AB2C



new

### WB9611

High Park 500 ml. Bottle

2.75" Diameter x 10" H

This Stainless Steel bottle has an attractive powder coated matte finish on both the bottle and the leak proof lid. It is double walled with vacuum insulation for temperature retention and holds up to 500 ml. (17 oz.). Stays hot up to 10 hours. Individually retail packaged.

50	250	500	1000	
19.92	16.53	14.53	13.98	AB2C



# DRINKWARE

## WB9282

Skylark 500 ml. Bottle

3" Diameter x 10.5" H

The large wide mouth opening makes for easy drinking and cleaning of this Stainless Steel interior bottle with matte finish. It is double walled and holds up to 500 ml. (17 oz.). It can be used with both hot and cold beverages.

50	250	500	1000
20.18	16.74	14.72	14.15

AB2C



new

## KP9513

Rockit Bottle Brush

13.5" Long

Clean the interior of your reusable bottles with the wide cleaning bristles of this cleaning brush. The handle is Wood with a Stainless Steel twisted stem. Use with both wide neck and narrow neck bottles.

75	250	500	1000
6.08	4.85	4.23	4.07

AB2C



Brown

new

## WB3030

Rockit Force 500 ml. Bottle

2.75" Diameter x 9.875" H

Keep your beverages cold or hot longer with this 18/8 Stainless Steel bottle that has a beautiful powder coated finish on the exterior. The inner Copper insulated liner along with the double walled vacuum insulation help retain the temperature of your beverage. Holds up to 500 ml. (17 oz.). Individually retail packaged. Stays hot up to 12 hours!

50	250	500	1000
20.86	17.34	15.25	14.67

AB2C



new

## WB9420

Contour 360° 600 ml. Bottle

3" Diameter x 9.5" H

The 360° drink design allows you to drink from anywhere around the lid when open. Push down on the center of the lid to open and push again to lock. The bottle has an exterior matte finish, is Stainless Steel with double walled vacuum insulation and holds up to 600 ml. (20 oz.). Stays hot up to 10 hours. Individually retail packaged.

50	250	500	1000
21.30	17.73	15.58	14.98

AB2C



## Double Walled - Stainless Steel

DOUBLE  
walled  
Vacuum  
INSULATION



Silver



Royal Blue



Black



White



Red



Black



Royal Blue



Navy Blue



Grey

Many bottles individually retail packaged as shown

Powder  
COATED  
Finish

Drink from anywhere around the lid

360° Drink  
Design



Navy Blue



Black



White

Double Walled - Stainless Steel

DRINKWARE



Black Royal Blue

Rubberized  
**COATED**  
Exterior!



Red

**WB9442**

Dewnenny 500 ml. Bottle

2.75" Diameter x 11" H

The exterior of this Stainless Steel double walled bottle has a rubberized coating. It is recommended for cold drinks, holds up to 500 ml. (17 oz.), has a matching coloured screw on lid with sipper straw, built-in handle and a non slip bottom base.

50	250	500	1000	
20.10	16.67	14.65	14.10	AB2C



Red Royal Blue White Purple



Patent Pending

Silver



Copper Black Lime Green



Black Royal Blue White



Silver

new

**WB9476**

Rockit Star 500 ml. Bottle

2.75" Diameter x 9.75" H

From the Rockit Bottle family, this bottle is designed with Hollywood style in mind. The double walled, vacuum insulated, Stainless Steel water bottle will keep your favourite beverage hot or cold for up to 12 hours! Its unique rounded and tapered design hits the mark when it comes to popular fashion forward designs. And the variety of colour options just can't be beat! Holds up to 500 ml. (17 oz.). Individually retail boxed.

50	250	500	1000	
20.40	16.94	14.90	14.33	AB2C



**LD4050**

Dome Lid for WB9476

50	250	500	1000	
1.90	1.73	1.08	1.08	AB2C

Add your own custom decorated four colour process dome decal. Available exclusively on our WB9476 Rockit bottle.

Custom four  
colour process  
LD4050 dome  
decals for  
WB9476 bottle  
lids.

**WB8877**

Rockit Water Bottle

3" Diameter x 10.75" H

Stay hydrated outdoors, at work and at school with this easy to clean Stainless Steel, vacuum insulated water bottle. It holds up to 500 ml. (17 oz.), is double walled and has a slim design for a sleek look. Stays cold up to 12 hours. Individually retail packaged.

50	250	500	1000	
21.42	17.82	15.67	15.07	AB2C





DRINKWARE

Double Walled - Stainless Steel

new

WB9566

Cliff Top 500 ml. Bottle

2.875" Diameter x 8.25" H

Tough enough to keep up! This Stainless Steel bottle's double walled vacuum insulated construction makes this bottle your ideal trail mate. Keep your beverages hot for up to 15 hours or cold for up to 12 hours! Use the attached lid strap as a carry handle when screwed on. The lid is also equipped with a Silicone slip grip allowing for great traction in any weather. Holds up to 500 ml. (17 oz.). Individually retail packaged.

50	250	500	1000
22.22	18.51	16.27	15.65
AB2C			



Lime Green



White



Royal Blue



Red



Black



WB9458

Quietcity 500 ml. Water Bottle

2.5" Diameter x 8.75" H

Sleek, stylish, and bold. This trendy cylindrical bottle features solid Stainless Steel and boasts double walled vacuum insulation to keep your beverage hot/cold for up to 9 hours! Make no mistake, the matte black exterior is romantically mysterious. This bottle is topped off with a contrasting glossy lid. Holds up to 500 ml. (17 oz.). Individually boxed.

50	250	500	1000
23.34	19.49	17.13	16.48
AB2C			



Blue



Silver



Green



White



Red



Copper



Dark Grey

new

WB9559

Mulberry 500 ml. Bottle with Strainer

3" Diameter x 10.5" H

Whether on the train ride to work or in the boat on an early morning fishing trip, this Stainless Steel bottle does it all. Its double walled vacuum insulation will keep your coffee/tea hot for up to 12 hours and your lemonade cold for up to 18 hours. It comes with a twist off strainer to keep your tea bags, fruit, or ice inside. Holds up to 500 ml. (17 oz.). Individually retail packaged.

50	250	500	1000
23.68	19.78	17.40	16.73
AB2C			



Many bottles individually retail packaged as shown



Red



Includes  
**TWIST-OFF**  
Strainer



Black



White



Royal Blue



## Double Walled - Stainless Steel

## DRINKWARE

### WB9317

Sub-Marcote 591 ml. Bottle

2.75" Diameter x 9.5" H

The leakproof lid with built-in carry handle is made from PP Plastic and twists on/off. The bottle is made from Stainless Steel, is double walled with vacuum insulation and holds up to 591 ml. (20 oz.). Individually boxed.

50	250	500	1000	
25.84	21.65	19.05	18.32	AB2C



Royal Blue Red Lime Green



White Black Purple



Orange

### WB8902

Sahara Quencher 945 ml. Water Bottle

3.5" Diameter x 11.25" H

The wide mouth opening of this extra-large water bottle makes refilling your hot or cold drink easy. You can access the drinking spout by unscrewing the top cap on the lid. It is made from Stainless Steel, is double walled with vacuum insulation and holds up to 945 ml. (32 oz.). Individually retail packaged. Stays hot up to 5 hours!

50	250	500	1000	
27.88	23.42	20.60	19.82	AB2C



Orange Lime Green Black



Purple Royal Blue White



Red

new

### WB9512

Cliff Top 2.0 1200 ml. Bottle

3.5625" Diameter x 11" H

Extra-large 1200 ml. (40 oz.) capacity. Whether you're climbing to the top of a mountain, or working hard at the construction site, this Stainless Steel bottle will keep your beverage icy cold or piping hot. Its durable double walled vacuum insulation is built tough for your rugged lifestyle. Will keep beverages cold for up to 18 hours and hot for up to 15 hours. Individually retail packaged.

50	250	500	1000	
30.72	25.87	22.77	21.90	AB2C



Black



Royal Blue



White

Extra-Large  
**1200 ml.**  
Capacity



# DRINKWARE

## Double Walled - Stainless Steel

new

### WB9620

Metamorph 2-in-1 Travel Tumbler/Bottle

3" Diameter x 7" H (tumbler)

3" Diameter x 10.5" (bottle)

A 2-in-1 bottle/tumbler that easily converts from carrying your hot morning beverage to holding your water to stay hydrated for the day. It is Stainless Steel with double walled vacuum insulation and the two lids are interchangeable. The tumbler holds up to 473 ml. (16 oz.) and the bottle holds up to 600 ml. (20 oz.). Stays hot up to 10 hours. Individually retail packaged.

50	250	500	1000
34.48	29.13	25.63	24.65
AB2C			



Bottle



White



Tumbler

Comes with two interchangeable lids



Black



Royal Blue

DOUBLE walled

new

### WB9290

1.89L Brewmaster Growler

4.75" Diameter x 12.25" H

The astonishing rise in popularity of micro-breweries has created a thriving market for growlers. This product is engineered to keep your beer fresh and ice cold with its double walled 18/8 Stainless Steel construction and tight sealing swing closure. Finished with a synthetic leather carry strap and neck rim to add an extra level of sophistication. Will keep your beer cold for up to 12 hours. Holds up to 1.89 L (64 oz.). Individually retail boxed.

50	250	500	1000
61.38	52.42	46.16	44.40
AB2C			



Black



Silver



Stainless Steel - Travel Mugs

DRINKWARE



Speaker



Black

new

WB5030

Rockit Blast 500 ml. Wireless Speaker Bottle

3" Diameter x 11.25" H

Listen to music on-the-go and stay hydrated with this Stainless Steel bottle that includes a speaker. The bottle is double walled with vacuum insulation and inner copper insulated liner. It holds up to 500 ml. (17 oz.). The rechargeable wireless 3 watt speaker works with most Bluetooth® enabled devices and can also be used as a speakerphone. Individually boxed. Stays hot up to 12 hours!

25	100	250	500	1000	
79.66	74.90	64.12	56.48	54.31	2AB2C



new

DA9610

Brewmaster 473 ml. Pint

3.5" Diameter x 5" H

The sturdy and modern design of this pint is ideal for pubs, bars, outdoor events and restaurants. It is single walled 18/8 Stainless Steel and holds up to 473 ml. (16 oz.) of your favourite cold beverage.

Silver

50	250	500	1000	
9.32	7.33	6.40	6.15	AB2C

Black, Royal Blue, White

50	250	500	1000	
10.62	8.45	7.40	7.12	AB2C



White



Silver



Royal Blue



Black



Lime Green



Black



Royal Blue



Red



Silver



Orange



Purple

DA9327

Wilson Avenue 450 ml. Travel Tumbler

3.25" Diameter x 7.5" H

This Stainless Steel travel mug fits most standard sized vehicle cup holders. Holds up to 450 ml. (15 oz.) of your favourite hot or cold beverage. Features PP inner black liner, screw-on PP lid with slide closure and PP handle.

50	250	500	1000	
9.74	7.71	6.75	6.48	AB2C

# DRINKWARE

## Stainless Steel - Travel Mugs

### DA4816

500 ml. Travel Tumbler

3.25" Diameter x 8" H

Double walled Stainless Steel exterior with matching coloured Plastic interior. Holds up to 500 ml. (17 oz.). The easy-grip Silicone wrap helps keep your hands cool. Individually boxed. Stays hot up to 2 hours!

50	250	500	1000	
9.96	7.91	6.93	6.67	AB2C



Red



Orange



Black



Royal Blue



Lime Green



Purple

new

### DA9501

Café Florence 475 ml. Travel Coffee Press

3.375" Diameter x 7.25" H

50	250	500	1000	
12.90	10.45	9.17	8.82	AB2C



Grey



Blue



Lime Green



Orange



Red

Looking for the perfect cup-of-joe on-the-go? Stop right here and check out these portable coffee presses that turn you into an instant barista. Put your favourite coffee grounds inside, add water, apply the press, and voila! The DA9501 has a black PP exterior and the DA9504 has a Stainless Steel exterior. Both styles come with your choice of removable coloured food grade PP coffee press. An easy open/close slide closure cleverly matches the colour of the interior press. These travel tumblers will keep you energized when heading into the office, or onto your next adventure.



Your Own  
Portable  
Coffee Press

new

### DA9504

Café Venice 475 ml. Travel Coffee Press

3.375" Diameter x 6.75" H

35	100	250	500	1000	
22.98	21.54	17.93	15.77	15.17	2AB2C



Blue



Grey



Orange



Red



Lime Green



Stainless Steel - Travel Mugs

DRINKWARE



Royal Blue

Red

Blue

Black



Lime Green

One-handed push  
button closure

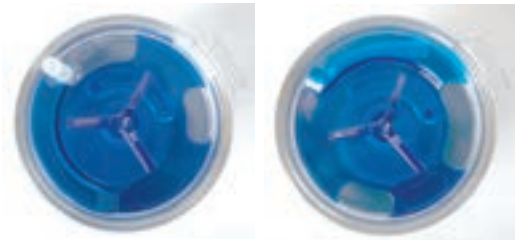
**WB6816**

Colorado Fresh 400 ml. Travel Tumbler

3" Diameter x 7.75" H

A great product for people on the go! The double walled vacuum insulation of this Stainless Steel tumbler creates an airless space between the walls and helps keep your beverage hot or cold longer. The PP twist-off and spillproof lid features a one-handed push button closure. Holds up to 400 ml. (13.5 oz.). Individually boxed. Stays hot up to 5 hours!

50	250	500	1000	
18.24	15.07	13.25	12.75	AB2C



Top of the straw hides in the top lid:  
just twist to reveal

The exterior of both the DA9612 and DA9632 Stainless Steel travel mugs have an eye-catching diamond pattern around the middle. They are double walled with vacuum insulation and feature a matching coloured/clear Acrylic snap-on straw lid with twisting closure. Just twist the lid to hide/reveal the included straw. The sipper hole on the lid can also be used for drinking. The DA9612 holds up to 600 ml. (20 oz.) and the DA9632 holds up to 450 ml. (15 oz.). Stays hot up to 5 hours. The DA9632 features the addition of an inside Borosilicate Glass liner. Individually retail packaged.



Lime Green

**new**

**DA9612**

Montego 600 ml. Travel Tumbler  
with Straw

3.5" Diameter x 6.75" H

50	250	500	1000	
18.78	15.54	13.67	13.15	AB2C



Black



Red



Royal Blue



White



Inner  
Glass Liner

**new**

**DA9632**

Ronbo 450 ml. Travel Tumbler  
with Glass Liner

3.5" Diameter x 6.75" H

35	100	250	500	1000	
29.90	28.12	23.62	20.78	19.98	2AB2C





WB9208



White

**WB9208**

Floren Hill 450 ml. Bottle  
with Strap Lid

2.5" Diameter x 8.5" H

**WB9209**

Gistel 450 ml. Bottle  
with Carabiner Lid

2.5" Diameter x 8.25" H

**WB9212**

Landen 450 ml. Bottle  
with Push Button Lid

2.5" Diameter x 8.25" H

The bottle for all three styles is double walled with vacuum insulation and holds up to 400 ml. (13.5 oz.). WB9208 lid features a leak proof PP twist on/off lid with push button closure and a webbed carry handle/strap. WB9209 PP leak proof lid twists on/off, has a push button closure and a carabiner carry handle. WB9212 PP lid twists on and off and has a push button to open/close on the top. Individually boxed. Stays hot up to 6 hours!

50	250	500	1000
18.78	15.54	13.67	13.15

AB2C



WB9209



White

WB9212



White

Stainless Steel - Travel Mugs

DRINKWARE



DA7047

Day Rider 600 ml. Travel Tumbler

3.5" Diameter x 6.75" H

Take your logo on the road with this travel tumbler that holds up to 600 ml. (20 oz.). It has a Stainless Steel interior and exterior, glossy dimpled design and a clear Acrylic snap on lid with Plastic sliding closure. It is double walled with vacuum insulation for use with hot and cold beverages. Individually retail packaged. Stays hot up to 6 hours!

50	250	500	1000	
18.92	15.65	13.75	13.23	AB2C

Leak resistant lid



WB9159

Lupen 400 ml. Travel Tumbler

2.875" Diameter x 7.625" H

This classically designed travel mug is made from Stainless Steel, is double walled with vacuum insulation and holds up the 400 ml. (13.5 oz.). The lid is PP, leak resistant and twists open/close.

50	250	500	1000	
19.20	15.91	13.98	13.45	AB2C



WB6405

Stealth Oasis 450 ml. Travel Tumbler

3" Diameter x 8" H

The double walled vacuum insulation is designed to help keep your beverage hot or cold longer. The interior and exterior are made from Stainless Steel and the twist off, leakproof and spillproof lid is Acrylic and PP. Holds up to 400 ml. (13.5 oz.). Individually boxed. Stays hot up to 6 hours!

50	250	500	1000	
20.96	17.42	15.32	14.73	AB2C



DRINKWARE

Stainless Steel - Travel Mugs

DA9313

Starlight 350 ml. Traveller Mug

3.25" Diameter x 4.25" H

A fresh new design for a coffee mug! The outside of this mug has a glitter matte finish with silver trim. It is 18/8 Stainless steel with double walled vacuum insulation and holds up to 350 ml. (12 oz.). The clear Acrylic push on lid has a sipper hole. Individually retail packaged.

35	100	250	500	1000
21.08	19.72	16.34	14.37	13.82
2AB2C				



Matte  
GLITTER  
Exterior!



Royal Blue



Black



Silver



Red



Lime Green

DA9362

Brewmaster 500 ml. Barrel Mug

3.5" Diameter x 5.25" H

The ideal mug for bars, breweries and pubs. Also makes a great groomsman gift. It is double walled to keep your beverage cold longer and is made from Stainless Steel. Holds up to 500 ml. (17 oz.) and has a large 'D' shaped handle. Individually retail packaged.

Black

50	250	500	1000
22.88	19.09	16.78	16.15
AB2C			

Copper, Silver

50	250	500	1000
21.08	17.53	15.40	14.82
AB2C			



Copper Glossy



Black Matte



Silver Glossy

WB6590

Wellspring 450 ml. Vacuum Travel Mug

2.75" Diameter x 9.5" H

The ideal travel mug for hot tea and coffee on the go! This product has a double walled vacuum insulated Stainless Steel interior and exterior and holds up to 450 ml. (15 oz.). The leakproof and spill-proof PP lid has a flip-top and locking mechanism. Individually boxed. Stays hot up to 6 hours!

50	250	500	1000
21.64	18.02	15.83	15.23
AB2C			



Lime Green



Red



Orange



Purple



Royal Blue



Black

Stainless Steel - Travel Mugs

DRINKWARE

Great size for use with single cup coffee machines



Royal Blue



White



Silver



Black



Red

MATTE  
Finish



Red



Lime Green



Black



Royal Blue



White

New York big city inspired designs in trendy matte colours! The Park and Parkette Avenue travel tumblers are your travel buddies that will soon become a vital part of your morning routine. The DA8432 Parkette Avenue holds up to 295 ml. (10 oz.) and fits perfectly under a single cup coffee maker. The DA9432 Park Avenue holds up to 600 ml. (20 oz.) for your extra-large morning caffeine. Both are made from durable Stainless Steel with double walled insulation and a clear Acrylic slide lid. Both mugs will stay hot up to 6 hours!

new

DA9432

Park Avenue 600 ml. Travel Mug

3.5" Diameter x 7" H

50	250	500	1000	
21.42	17.82	15.67	15.07	AB2C



Geometric  
PATTERNED  
Bottom



Silver



Black



Royal Blue



DA8920

Licorice 600 ml. Travel Tumbler

3.75" Diameter x 7" H

Unique 'licorice' inspired geometric patterned travel tumbler holds up to 600 ml. (20 oz.). It is made from 18/8 Stainless Steel, has double walled vacuum insulation and a clear Acrylic lid with slide closure. Individually retail packaged. Stays hot up to 8 hours!

50	250	500	1000	
22.54	18.80	16.53	15.90	AB2C





# DRINKWARE

## Stainless Steel - Travel Mugs

new

DA9335

Neva 400 ml. Travel Tumbler

3.25" Diameter x 7.625" H

Use this travel mug on your daily commute. It has a Ceramic interior liner with a Stainless Steel exterior and holds up to 400 ml. (13.5 oz.). The double walls help retain the temperature of your hot or cold beverage. The top black lid has a PP sliding closure for easy drinking. Stays hot up to 2 hours. Individually boxed.

35	100	250	500	1000
22.74	21.30	17.73	15.58	14.98

2AB2C



Silver



Dark Grey

WB9326

Seattle 450 ml. Travel Tumbler

2.75" Diameter x 8.25" H

The lid of this travel mug can be used two different ways: sipper hole or straw (straw not included). It is double walled Stainless Steel with vacuum insulation for temperature retention. Holds up to 450 ml. (15 oz.). Individually retail boxed.

50	250	500	1000
23.12	19.29	16.97	16.32

AB2C



Royal Blue



Black



Red



WB8685

500 ml. Leakproof Travel Tumbler

3" Diameter x 8.75" H

This travel tumbler has a Stainless Steel exterior and includes a leakproof lid. It is double walled with a vacuum seal to help keep your beverage warm. Includes an 18/8 inner Stainless Steel liner and EVA bottom. Holds up to 500 ml. (17 oz.). Individually boxed. Stays hot up to 5 hours!

50	250	500	1000
24.24	20.27	17.83	17.15

AB2C



Black



Silver



Royal Blue



Stainless Steel - Travel Mugs

DRINKWARE



Black White Red



Royal Blue

Rubber  
**COATED**  
exterior

new

DA9546

Gotham Tower 600 ml. Travel Tumbler

2.875" Diameter x 8.25" H

This travel tumbler features a rubber coated exterior with an extra-large 600 ml. (20 oz.) capacity. It is double walled, Stainless Steel with a clear snap-on Acrylic lid and sliding closure. For use with both hot and cold beverages. Stays hot up to 6 hours. Individually retail packaged.

35	100	250	500	1000
24.64	23.12	19.29	16.97	16.32 2AB2C



Red Royal Blue White Lime Green



Black

Easy  
**CLEAN**  
Lid

new

DA9624

Frequency 600 ml. Travel Tumbler

3.375" Diameter x 7.5" H

This Stainless Steel travel mug features a powder coated exterior with double walled vacuum insulation. The easy clean Acrylic screw on lid has a matching coloured flip top cap. Holds up to 600 ml. (20 oz.) and has a rubber non-slip bottom. Stays hot up to 6 hours. Individually retail packaged.

35	100	250	500	1000
25.12	23.58	19.69	17.32	16.65 2AB2C



Powder  
**COATED**  
Finish



Royal Blue Silver



Slate Grey

new

DA9616

Fulcrum 500 ml. Travel Tumbler

3.25" Diameter x 8.75" H

This Stainless Steel travel mug with double walled vacuum insulation features a large and comfortable black PP carry handle. The PP lid is black with a flip top cap and the tumbler holds up to 500 ml. (17 oz.). Stays hot up to 4 hours. Individually retail packaged.

35	100	250	500	1000
25.12	23.58	19.69	17.32	16.65 2AB2C

# DRINKWARE

## Stainless Steel - Travel Mugs

new

### WB9403

Dartmouth 400 ml. Travel Tumbler

3.25" Diameter x 9" H

The easy clean leak proof PP lid on this travel tumbler slides forward to open for drinking and slides back again to close. The tumbler is Stainless Steel with double walled vacuum insulation and holds up to 400 ml. (13.5 oz.). Stays hot up to 4 hours. Individually retail packaged.

50	250	500	1000
27.22	22.84	20.08	19.32
AB2C			



Royal Blue

Top slides forward for drinking

Easy  
**CLEAN**  
Lid



Black



Silver

### DA9380

Cassius 350 ml. Travel Mug

3.5" Diameter x 4.75" H

This travel mug is shaped like a ceramic mug and is made from Stainless Steel with double walled vacuum insulation. It features a heavy weight bottom base, matte exterior finish with glossy silver trim, 'D' shaped handle and clear Acrylic snap on lid with slider opening. Holds up to 250 ml. (12 oz.). Individually retail packaged.

35	100	250	500	1000
28.24	26.54	22.25	19.57	18.82
2AB2C				



Royal Blue



Silver



Black

### DA9920

Tall Licorice 900 ml. Travel Tumbler

3.75" Diameter x 9.25" H

The geometric pattern on this 18/8 Stainless Steel travel tumbler reminds you of the twist of a piece of licorice. It has an extra-large 900 ml. (30 oz.) capacity and has double walled vacuum insulation. Individually retail packaged. Stays hot up to 8 hours!

50	250	500	1000
29.84	25.11	22.08	21.23
AB2C			



Geometric  
**PATTERNED**  
Bottom



Silver



Black



Stainless Steel - Travel Mugs

DRINKWARE



Royal Blue



Silver



White

White  
**CERAMIC**  
Interior!



Black

DA9402

Rown 600 ml. Tumbler  
with Ceramic Lining

3.75" Diameter x 7" H

This tumbler features inner white Ceramic lining, glossy exterior finish and silver rim/base. It is made from 18/8 Stainless Steel and is double walled with vacuum insulation for temperature retention. The push on clear Acrylic lid has a slider closure. Holds up to 600 ml. (20 oz.). Individually retail packaged.

35	100	250	500	1000	
32.04	30.16	25.38	22.33	21.48	2AB2C



Inner gel  
freezes to  
keep your  
beverage cold



Black

new

WB9287

Nunatak 250 ml. Stemless Chill Glass

2.75" Diameter x 4.75" H

This 18/8 Stainless Steel, double walled glass is designed to be stored in the freezer to freeze the inner gel so it is ready to use when you need a chilled drink. Includes a non-slip Silicone base/grip and holds up to 250 ml. (8 oz.). Recommended for cold beverages. Individually retail packaged.

25	100	250	500	750	
37.22	34.48	29.13	25.63	24.65	2AB2C



Red



Black



White



Orange



Silver



Royal Blue



Lime Green

NEW

WB7107

500 ml. Water Bottle with Carabiner

2.875" Diameter x 7.5" H

This Aluminum reusable bottle is a great alternative to a disposable one. Holds up to 500 ml. (17 oz.). Black twist-off cap with key ring and matching coloured carabiner (except white - silver carabiner)

100	250	500	1000	
6.12	5.05	4.42	4.25	AB2C



# DRINKWARE

## Aluminum



### WB8007

750 ml. Water Bottle with Carabiner

3" Diameter x 9.5" H

Aluminum water bottle with matching coloured carabiner key ring to attach to your backpack or bag. Holds up to 750 ml. (25 oz.) and has a black plastic twist off cap (except white - silver carabiner).

100	250	500	1000
6.44	5.35	4.67	4.50
AB2C			



Silver



Red      Royal Blue      White      Purple



Black      Lime Green      Orange

### WB9107

Duhrbray 500 ml. Matte Finish Bottle

2.875" Diameter x 7.5" H

This bottle is the same styling as our WB7107 but has a matte finish like our WB7075 bottle. It is made from Aluminum, has a black Plastic screw on lid and holds up to 500 ml. (17 oz.). A great long-lasting promotional item.

100	250	500	1000
6.34	5.25	4.58	4.42
AB2C			



Royal Blue

Elegant  
**MATTE**  
Finish



Lime Green



Black



Silver



Purple

new

### WB9641

Freshy 750 ml. Aluminum Bottle

2.875" Diameter x 9" H

This single walled bottle is made from Aluminum and holds up to 750 ml. (25 oz.). It is for use with cold beverages and has a white Plastic twist-off lid with finger carry loop that is attached to avoid getting lost.

50	250	500	1000
7.92	6.13	5.37	5.17
AB2C			



Silver



Lime Green      Black      Orange



White      Royal Blue      Red



## Aluminum

## DRINKWARE

### WB9305

Hawthorne 500 ml. Bottle

2.75" Diameter x 8" H

The lid of this Aluminum bottle has a built-in handle to easily carry. It is made from Aluminum, holds up to 500 ml. (17 oz.), has a wide mouth opening and a screw on PP lid with flip cap.

50	250	500	1000	
9.02	7.09	6.22	5.98	AB2C



White

### WB9384

Machinist 750 ml. Bottle

2.75" Diameter x 10" H

This Aluminum bottle with wide mouth opening is single walled for use with your cold beverage. It holds up to 750 ml. (25 oz.) and has a screw on lid with built-in straw and carry handle.

50	250	500	1000	
9.72	7.69	6.73	6.48	AB2C



Lime Green

### WB7381

750 ml. Water Bottle

3" Diameter x 9" H

Lightweight and durable Tritan™ Copolyester bottle. Includes a screw-on sip lid with matching coloured sipper and Silicone ring. Holds up to 750 ml. (25 oz.).

100	250	500	1000	
8.60	7.20	6.30	6.07	AB2C



Orange



Royal Blue

Red

Black



Silver

Lime Green



Red

Silver

Royal Blue

White

Black



Lime Green

Black

Yellow

Purple

Royal Blue

Red



# DRINKWARE

Tritan™

## WB8192

750 ml. Water Bottle

3" Diameter x 9.5" H

Tough and long-lasting Tritan™ Copolyester bottle with matching coloured ring and silicone bracelet. Includes a screw-on flip-up sip lid with easy-carry handle. Holds up to 750 ml. (25 oz.).

100	250	500	1000
9.16	7.69	6.73	6.48
AB2C			



Yellow



Royal Blue   Lime Green   Purple   Orange



Black   Red   White

new

## WB7480

Peak Tide 700 ml. Bottle

2.75" Diameter x 10" H

The Peak Tide bottle is made of heavy-duty and durable Tritan™. A classic design with a convenient top carry handle lid. The simplicity of this bottle lends itself to the essential task of keeping you hydrated. Holds up to 700 ml. (23.5 oz.).

50	250	500	1000
9.26	7.29	6.38	6.15
AB2C			



Red



Black   Lime Green   Royal Blue

new

## WB9347

Bacia 750 ml. Bottle

3" Diameter x 8" H

This Tritan™ single walled bottle is perfect for use with your cold beverage. It holds a generous 750 ml. (25 oz.) and has a matching coloured screw-on PP lid with carry handle. The wide mouth opening allows you to easily add ice cubes.

50	250	500	1000
9.94	7.89	6.92	6.65
AB2C			



Royal Blue



Red   Clear   Lime Green

Tritan™

## DRINKWARE



Royal Blue

Red

Orange

Lime Green

Clear

Black

Purple

### WB9308

Nebula 740 ml. Bottle

2.5" Diameter x 10.5" H

The two Silicone rings around the bottom of this Tritan™ bottle match the colour of the screw on lid with built-in carry handle. Holds up to 750 ml. (25 oz.).

50	250	500	1000	
10.18	8.09	7.08	6.82	AB2C



Red

Royal Blue

Orange

Lime Green

Clear

Black

Purple

### WB8092

Rockit Clear 700 ml. Bottle

2.75" Diameter x 9.75" H

The body of this bottle is made from Tritan™ and the bottom base and leakproof lid are both Stainless Steel. Stay hydrated on the go with this bottle that holds up to 700 ml. (23.5 oz.).

50	250	500	1000	
10.28	8.18	7.17	6.90	AB2C



Purple

Lime Green

Orange

White

Black

Royal Blue

### WB6317

500 ml. Curve Bottle

2.5" Diameter x 9" H

Easy-grip curved shape Tritan™ Copolyester bottle and lid with your choice of coloured Silicone spout. Holds up to 500 ml. (17 oz.).

50	250	500	1000	
10.44	8.31	7.28	7.02	AB2C



# DRINKWARE

Tritan™

new

## WB9629

Clasher 750 ml. Bottle with Sipper Straw

3" Diameter x 8.75" H

The lid on this bottle features a carrying handle and spout with a flip-up straw. The bottle holds up to 750 ml. (25 oz.) and is single walled Tritan™. Carry your cold beverage with you while on-the-go.

50	250	500	1000	
10.52	8.38	7.35	7.07	AB2C



Clear



Royal Blue



Lime Green



Red

## WB9344

Neon Slim 750 ml. Bottle

3" Diameter x 9.75" H

Choose from seven different colours of this singled walled Tritan™ bottle. It has a screw on/off lid and a Stainless Steel bottom base. Holds up to 750 ml. (25 oz.).

50	250	500	1000	
10.62	8.47	7.43	7.15	AB2C



Black



Red



Purple



Orange



Lime Green



Clear



Royal Blue

new

## WB9613

Castaway 700 ml. Bottle with Cork Cap

2.75" Diameter x 9.75" H

This Tritan™ single walled bottle features a twist-on Cork and Plastic lid. It holds a substantial 700 ml. (23.5 oz.) of your favourite cold beverage to help you stay hydrated.

50	250	500	1000	
10.86	8.67	7.60	7.32	AB2C



Orange



Clear



Lime Green



Red



Royal Blue

Tritan™

DRINKWARE



Lime Green

Red

Royal Blue

Clear



Black

WB9118

Aquamax 1100 ml. Oversized Water Bottle

3.5" Diameter x 9" H

Use this oversized single walled Tritan™ bottle that holds 1100 ml. (37 oz.) to help get your 8 glasses a day! The screw on/off PP lid is attached with a carry handle. The top wide mouth opening makes it easy to add ice.

50	250	500	1000	
10.86	8.67	7.60	7.32	AB2C



Red

Black

Lime Green

Orange



Royal Blue

WB9131

Astrobee 750 ml. Leakproof Bottle

3" Diameter x 9" H

This 750 ml. (25 oz.) capacity single walled bottle has a screw on/off leakproof lid with slide closure. It is made from Tritan™ and has a wide mouth opening.

50	250	500	1000	
11.18	8.96	7.87	7.57	AB2C



LEAKPROOF  
Lid



Clear

Royal Blue

Black

Lime Green



Red

WB6543

Thirst Manager 890 ml. Strong Bottle

4.25" Diameter x 10" H

Stay hydrated on-the-go with this Tritan™ Copolyester bottle with extra-large capacity. Features a screw off PP lid with top cap and carry handle. Unscrew the smaller top lid to take a drink. Holds up to 890 ml. (30 oz.).

50	250	500	1000	
11.22	8.98	7.87	7.57	AB2C





# DRINKWARE

Tritan™

## WB8579

700 ml. Fruit Infuser Water Bottle

## WB8583

700 ml. Water Bottle

2.5" Diameter x 10.5" H

Order WB8583 for just the water bottle or WB8579 for the water bottle with included fruit infuser. This single walled water bottle is made from Tritan™ Copolyester and has a dome carry handle lid with Silicone spout for easy drinking. Holds up to 700 ml. (23.5 oz.).

### WB8579

50	250	500	1000	
12.76	10.33	9.07	8.73	AB2C

### WB8583

50	250	500	1000	
11.76	9.45	8.30	7.98	AB2C

## WB8579

Black

Includes  
flavour  
infuser

Lime Green

Red

Royal Blue

## WB8583

Royal Blue

Black

Lime Green

Red

## WB9469

Black Veil 650 ml. Bottle

2.75" Diameter x 10" H

The body of this Tritan™ bottle is transparent and holds up to 650 ml. (22 oz.). The lid screws on/off and has a built-in carry handle, auto push button and drinking spout.

50	250	500	1000	
12.12	9.76	8.57	8.25	AB2C



Clear



Black

Royal Blue

Lime Green

Red

DRINKWARE



Lime Green

Red

Orange

Royal Blue

Black

Purple

This Tritan™ single walled water bottle stresses simplicity by focusing on the fundamental principles of hydration...Drink. More. Water! Its contemporary design features subtle colour accents and a unique carry handle that cleverly features a flip up straw. The bottle is the same for both WB9515 and WB9505 and holds up to 700 ml. (23.5 oz.). With WB9515 you can take the party anywhere by adding a dash of flavour to the clear removable infuser with your favourite fruits, herbs or vegetables.



Includes  
FRUIT  
Infuser



Royal Blue

Red

Purple

Orange

Black

Lime Green

new

WB9505

Purist 700 ml. Bottle with Straw

3.125" Diameter x 9.5" H

50	250	500	1000	
11.32	9.07	7.95	7.65	AB2C

new

WB9515

Mixologist 700 ml. Infuser Bottle with Straw

3.125" Diameter x 9.5" H

50	250	500	1000	
12.22	9.85	8.65	8.32	AB2C



WB9027

Selma Sipper 680 ml. Infuser Bottle

3" Diameter x 9.25" H

Give your water natural flavouring by putting your favourite fruit into the infuser of this Tritan™ bottle. It is ideal for home, office, school, travel, yoga and your other work outs. The ABS lid screws on and has a carry handle. Holds up to 680 ml. (23 oz.).

50	250	500	1000	
12.34	9.96	8.73	8.40	AB2C

# DRINKWARE

Tritan™

new

## WB9575

Chillax 600 ml. Mist Bottle

2.875" Diameter x 10.25" H

Just squeeze the trigger on this misting water bottle to produce a fine mist to help you cool down. The single walled Tritan™ bottle holds up to 600 ml. (20 oz.) to keep you hydrated. The top lid is attached so it doesn't get lost and has a loop carry handle. The wide mouth design allows you to easily add ice cubes.

50	250	500	1000	
13.36	10.84	9.52	9.15	AB2C



NOT AVAILABLE FOR SALE IN USA



Royal Blue



Black

Clear

Lime Green

Red

new

## WB9610

Ashmere 890 ml. Bottle with Silicone Phone Stand

3.375" Diameter x 10" H

The Silicone wrap on this bottle is adjustable to hold different sized phones. The bottle is single walled Tritan™ and holds a generous 890 ml. (30 oz.) of your cold beverage. The lid screws on with a flip up top cap that opens to reveal a drinking spout.

50	250	500	1000	
17.44	14.38	12.63	12.15	AB2C



Red



Lime Green



Grey



Royal Blue

new

## WB9489

500 ml. Hydrotune Speaker Bottle

2.75" Diameter x 10" H

This single walled Tritan™ bottle includes a twist-off bottom that has a 3 watt V4.2 wireless speaker to listen to music and stay hydrated. The bottle holds up to 500 ml. (17 oz.) and has a two tone PP lid with built-in carry handle. The speaker can also be used for hands-free calling. Individually retail packaged.

50	250	500	1000	
34.24	28.93	25.45	24.48	AB2C



Black



Royal Blue



Speaker





## Acrylic

## DRINKWARE



Clear



Black



Royal Blue



Red



Lime Green

**3D  
GEOMETRIC  
Pattern**

### DA9435

Arctic Peak 650 ml. Travel Tumbler

3.25" Diameter x 9.25" H

The extra-large capacity of this AS Acrylic tumbler holds up to 650 ml. (22 oz.). It features double walls to keep your hands dry, 3D geometric pattern on the inner wall and a screw on clear Acrylic lid with matching coloured flip cap.

50	250	500	1000
11.64	9.36	8.22	7.90
			AB2C



Black



Lime Green



Purple



Royal Blue



Orange



Red



Smoke

### DA8321

500 ml. Tumbler with Straw

4" Diameter x 6.25" H

### DA8808

709 ml. Tumbler with Straw

4" Diameter x 8" H

There are an array of colour options available in this double walled Acrylic tumbler. The DA8808 holds up to 709 ml. (24 oz.) and the DA8321 holds up to 500 ml. (17 oz.). Both styles include a clear tumbler with your choice of coloured lid and stay-put drinking straw.

DA8321

100	250	500	1000
6.68	5.53	4.82	4.63
			AB2C

DA8808

50	250	500	1000
10.26	8.16	7.15	6.88
			AB2C



DA8321

DA8808



Royal Blue



Red



Smoke



Clear



### DA7321

500 ml. Tumbler with Straw

4" Diameter x 6.25" H

This double walled Acrylic tumbler will help keep your hands dry and your drink cold. Includes a sturdy stay-put drinking straw and a twist-off lid. Holds up to 500 ml. (17 oz.).

100	250	500	1000
6.68	5.53	4.82	4.63
			AB2C





# DRINKWARE

## Acrylic

### DA8766

Jolly Maxer 700 ml. Mason Jar Tumbler

3" Diameter x 6" H

This single walled tumbler is shaped like a classic mason jar. It is safe to use around the swimming pool and at the beach. It is made from Acrylic, holds up to 700 ml. (23.5 oz.) and includes a twist-off lid and stay-put drinking straw.

100	250	500	1000
7.46	6.22	5.43	5.23

AB2C



Lime Green



Black



Royal Blue



Red

### DA9321

500 ml. Tumbler with Straw

4" Diameter x 6.25" H

A sonic welded tumbler for creating your own custom four colour process paper banners or decals. The decal or paper banner is inserted between the double walls and then sealed for insulation. Double walled Acrylic tumbler holds up to 500 ml. (17 oz.) and includes sturdy matching coloured straw.

50	250	500	1000
8.94	7.05	6.20	6.00

AB2C



new

### WB9617

Volumo 1000 ml. Bottle

4.375" Diameter x 8.375" H

Huge one litre capacity! This bottle is great for sports practices and work outs. It is made from AS with a screw on black PP lid and light grey Silicone gripper. Holds up to 1000 ml. (33 oz.) of your cold beverage.

50	250	500	1000
8.82	6.91	6.05	5.82

AB2C



Black

Huge  
1 LITRE  
Capacity!



Lime Green



Red



Royal Blue



Clear

Acrylic

DRINKWARE

DOUBLE  
Walled



Black      Orange      Royal Blue      Red      White



Lime Green

DA9134

Esgore 600 ml. Travel Tumbler

3.5" Diameter x 7.25" H

Use this Acrylic travel tumbler at the office, in the car and whenever you are out and about. It is double walled for extra insulation and has a clear Acrylic snap-on lid with matching colour Plastic slide.

50	250	500	1000	
9.08	7.15	6.25	6.02	AB2C



Smoke      Royal Blue      Red      Clear



Lime Green

new

DA9320

Thrills 295 ml. Double Walled Tumbler

3.25" Diameter x 4.5" H

This 295 ml. (10 oz.) tumbler is made from double walled Acrylic and has a clear snap-on lid with slide closure. The double walls allow your hands to stay dry while helping to keep your beverage cool. You choose the colour of matching lid and inside wall.

50	250	500	1000	
9.62	7.60	6.65	6.40	AB2C



White      Black      Lime Green      Red

RUBBERIZED  
Exterior



Royal Blue

new

WB9623

Grappler 1000 ml. Bottle

3.4375" Diameter x 9.5" H

A giant water bottle that holds one litre of your cold beverage. It is single walled AS with a non-slip Rubberized exterior. The PP lid screws on, has a swing up carrying handle and a Silicone grip. The bottle holds up to 1000 ml. (33 oz.). The wide mouth opening makes it easy to add ice to keep your beverage cold.

50	250	500	1000	
9.94	7.89	6.92	6.65	AB2C



# DRINKWARE

## Acrylic

### DA9129

Antares 450 ml. Travel Tumbler

3.25" Diameter x 8.5" H

The double walls on this AS Acrylic tumbler help keep your coffee, tea or other beverage hot longer. The screw on, leakproof lid helps reduce spills and it holds up to 450 ml. (15 oz.).

50	250	500	1000
11.64	9.36	8.22	7.90
AB2C			



Clear



Black

Red

Royal Blue

### DA8733

Festival Goer 500 ml. Party Cup

4" Diameter x 4.75" H

A cup for all occasions! The PP Plastic party cup is double walled to help keep your drink cold longer. It is 100% reusable and holds up to 500 ml. (17 oz.). Cups are polybagged and packed into each other and stacked together for shipping.

150	250	500	1000	2500
4.14	3.49	3.02	2.90	2.77
AB3C				

Red



Royal Blue

Black

Orange



Lime Green

Purple

White

### WB8868

Functionista 750 ml. Push-Pull Sports Bottle

2.75" Diameter x 9.25" H

A soft and squeezable bottle made from LDPE Plastic that is great for the gym, biking, walking, hiking and sports teams. It holds up to 750 ml. (25 oz.) and has a screw-on top lid with push-pull drinking spout as well as comfort finger grips on one side of the bottle.

100	250	500	1000
4.64	3.78	3.30	3.18
AB2C			

Red



Lime Green

White

Black

Royal Blue

## Squeeze Bottles

## DRINKWARE

### WB9188

Valais 1000 ml. Squeeze Bottle

3" Diameter x 9.5" H

Just squeeze to get a drink out of the soft LDPE Plastic bottle. It has an extra-large 1000 ml. (33 oz.) capacity and a screw on/off lid.

100	250	500	1000	2500
5.52	4.55	3.97	3.82	3.65
AB3C				

Your choice of:

Black, Green, Orange, Red, Royal Blue or White Bottle with Black, Green, Orange, Red, Royal Blue or White Lid

### WB8118

Victory 1000 ml. Squeeze Bottle

3" Diameter x 10" H

The squeezable body of the bottle is made from soft LDPE Plastic. It includes a screw on/off lid and a see-through seam. Just squeeze the body to dispense liquid. Holds up to 1 litre/1000 ml. (33 oz.).

100	250	500	1000	2500
5.52	4.55	3.97	3.82	3.65
AB3C				

**MIX  
N' MATCH**  
bottle & lid  
**COLOURS**



### WB6785

Cross-Trainer 400 ml. Small Shaker Bottle

3.75" Diameter x 6.75" H

Easily mix protein, nutrition and meal replacement drinks as well as eggs, pancake batter and salad dressing in this shaker bottle. It holds up to 400 ml. (13.5 oz.) and is made from PP Plastic with a Plastic matching colour shaker ball that helps blend contents to a smooth consistency. See WB8785 on page 36 for large shaker bottle.

100	250	500	1000
6.00	4.96	4.33	4.17
AB2C			



Red



Lime Green



Royal Blue



Black



# DRINKWARE

## Shaker Bottles

### WB8785

Cross-Trainer Max 600 ml. Large Shaker Bottle

3.75" Diameter x 9" H

This 600 ml. (20 oz.) shaker bottle is made from PP Plastic and includes a matching colour Plastic shaker ball to blend contents to a smooth consistency. The wide mouth opening makes it easy to add ingredients. The lid screws on and has a secure snap closure. See WB6785 on page 35 for smaller shaker bottle.

100	250	500	1000	
6.92	5.75	5.02	4.83	AB2C

Plastic shaker ball helps blend contents to a smooth consistency



### WB9785

Mr. Varsity 700 ml. Shaker Bottle

3.125" Diameter x 7" H

This PP Plastic shaker has measurement lines on the side and holds up to 700 ml. (23.5 oz.). The included shaker ball helps to remove all lumps to mix to a smooth consistency. The lid screws on/off, has a push button auto-open feature and a built-in carry handle.

50	250	500	1000	
9.62	7.60	6.65	6.40	AB2C



### WB6434

Fitness Fanatic 600 ml. Shaker Bottle

4.25" Diameter x 9.5" H

This PP and PE Plastic bottle features a shaker bottle, pill box and extra container. The wide mouth makes it easy to add ingredients and blend to a smooth consistency with removable strainer. The bottom compartment has space at one end for pills/vitamins and use the other end for your protein powder or other supplements. Holds up to 600 ml. (20 oz.).

50	250	500	1000	
10.62	8.47	7.43	7.15	AB2C

Includes shaker bottle, pill box and extra container



## Folding Water



Green Black Clear Red



Blue

## DRINKWARE

### WB1814

540 ml. Water Bag

4.5" Diameter x 10.25" H

This Polyethylene collapsible water bag stands upright when filled with liquid. It has a plastic cap with a twist off, push-pull lid and holds up to 540 ml. (18 oz.).

100	250	500	1000	2500	
3.32	2.62	2.25	2.15	2.05	AB3C



Translucent Royal Blue

Silver

Translucent Aqua Blue

Translucent Red

Translucent Lime Green

### WB8314

Folding 591 ml. Water Bag

5.5" W x 10" H

Collapsible Polyethylene water bag with plastic cap and twist-off, push/pull lid. Holds up to 591 ml. (20 oz.). Stands upright when full. Can be folded or rolled when empty and is lightweight for easy carrying.

100	250	500	1000	2500	
3.86	3.09	2.67	2.55	2.43	AB3C



Purple

Orange

Lime Green

Royal Blue

Red



Black

### WB8293

500 ml. Wide Mouth Water Bottle

3" Diameter x 9.75" H (bottle)

Single wall Glass bottle with wide mouth opening accommodates ice cubes. Bottle holds up to 500 ml. (17 oz.) and has a top screw on cap with carry handle. For cold beverages only. Individually boxed.

100	250	500	1000	
8.96	7.53	6.60	6.35	AB2C



DRINKWARE

Glass

WB1503

600 ml. Bottle

2.5" Diameter x 8.75" H (bottle)

600 ml. (20 oz.) single walled Borosilicate Glass bottle with wide mouth opening for cold beverages. Screw on/off lid with see-through glass. Individually boxed.

50	250	500	1000
12.26	9.89	8.68	8.35
AB2C			



Royal Blue



Silver



Red



Lime Green



Black

WB9271

Sea Breeze 450 ml. Bottle

2.25" Diameter x 8.5" H

A stylish and trendy ombre gradient Borosilicate Glass bottle for use with cold beverages. It has a screw on PP lid with coloured Silicone ring and carry handle and holds up to 450 ml. (15 oz.). Individually retail packaged.

50	250	500	1000
12.34	9.96	8.73	8.40
AB2C			



Stylish  
OMBRE  
Gradient!

Lime Green



Royal Blue



Pink



Red



WB8480

600 ml. Water Bottle

2.75" Diameter x 10.5" H

Single walled Borosilicate Glass bottle with your choice of coloured plastic screw-on lid. The lid can also be used to carry the bottle. Wide mouth opening to accommodate ice cubes and holds up to 600 ml. (20 oz.). For cold beverages only. Individually boxed.

50	250	500	1000
12.96	10.49	9.20	8.85
AB2C			



Royal Blue



Lime Green



Black



Red

## Glass

## DRINKWARE



Black

Silver

Purple



Includes  
**REMOVABLE**  
Strainer

Blue

**new**

**WB9325**

Tea Current 300 ml. Bottle with Strainer

2.5" Diameter x 9" H

Tea is the new coffee! Made from heavy-duty Borosilicate Glass and a removable Stainless Steel tea strainer, this eye-catching vessel is on point. The unique ABS ribbed lid gives this bottle a sophisticated look. The double walled construction will keep your tea hot or cold for up to 2 hours. Holds up to 300 ml. (10 oz.). Individually retail packaged.

50	250	500	1000	
14.06	11.45	10.05	9.67	AB2C



White

Black

Purple



Lime Green

Red

Royal Blue



Wrap ships  
inside bottle

Orange

**WB9439**

Mariner 450 ml. Bottle

2.5" Diameter x 7" H

All of the bottles for this style are clear with a white lid and include a clear Silicone wrap. You get to choose the colour of the Silicone carry strap. The bottle is made from Borosilicate Glass and is single walled for use with cold beverages. Holds up to 450 ml. (13.5 oz.). Wrap ships inside the bottle. Individually retail packaged.

50	250	500	1000	
14.82	12.11	10.63	10.23	AB2C



Black

Lime Green

White

Silicone Wrap is  
removable for easy  
cleaning

**WB9099**

Queensway 520 ml. Bottle

3" Diameter x 8.25" H

This Borosilicate Glass bottle has a Silicone wrap that is removable for easy cleaning. The PP screw on/off lid has a matching coloured carry ring on the handle. Holds up to 520 ml. (17.5 oz.). For cold beverages only. Individually retail packaged

50	250	500	1000	
16.20	13.31	11.68	11.23	AB2C



Orange

Red

Royal Blue



Purple



# DRINKWARE

## Glass

new

### WB9311

Clearwater 500 ml. Bottle

3.125" Diameter x 7" H

Pure, sustainable, and elegant, this Borosilicate Glass bottle has a clear Acrylic screw-on lid with stiff carry ring, juxtaposed against a pop of Silicone colour. The beautiful Silicone is easy to grip and adds a level of protection for the Glass. Holds up to 500 ml. (17 oz.). For use with cold beverages only. Individually retail packaged.

50	250	500	1000
16.52	13.58	11.93	11.48
AB2C			



Red



Lime Green



Black



Royal Blue

Many bottles individually retail packaged as shown

Silicone is removable for cleaning. See website for details

### WB9480

High Tide 550 ml. Bottle

2.75" Diameter x 10.5" H

The large capacity of this Borosilicate Glass bottle helps keep you hydrated. The Silicone wrap helps protect the bottle. Holds up to 550 ml. (18.6 oz.). The lid is made from PP and has a carry handle. For use with cold beverages only. Individually retail packaged.

50	250	500	1000
16.52	13.58	11.93	11.48
AB2C			



Lime Green



Red



Orange



Royal Blue



Purple



Black



White

new

### WB9615

Brook 250 ml. Infuser Bottle

2.5" Diameter x 9" H

Open the top single walled Glass compartment of this infuser bottle to add your loose tea leaves to the strainer, add hot water to the double walled 250 ml. (8 oz.) Borosilicate Glass tumbler, reattach the lid and turn upside down to steep. Just turn back to upright position and unscrew the strainer to enjoy your beverage. The tea leaves can be left in the top Glass compartment for a second brew. Individually boxed.

50	250	500	1000
16.98	13.98	12.28	11.82
AB2C			



Black



Includes  
**REMOVABLE**  
Strainer





**PB1000**  
Custom Band

Four colour process cardstock band to wrap around your drinkware item.

100	250	500	1000	
3.13	2.69	2.25	1.81	4G

Take your promotional piece to the next level with stunning, full colour process, custom packaging! Create your own beautiful custom box, custom sleeve, or custom belly band and turn your next promotional piece into a retail inspired gift. A simple and affordable way to add that “wow” factor you’re looking for. Expand your advertising space by creating more room for sponsor logos and/or messages, event details, coupons, other marketing strategies and so much more!



**PB2000**  
Custom Sleeve

Four colour process cardstock sleeve to slide over the product box.

100	250	500	1000	
3.13	2.69	2.25	1.81	4G



**PB3000**  
Custom Box

A custom four colour process box adds extra space for branding. Please see website for all products that can be ordered with custom band, sleeve and box.

250	500	1000	
6.44	4.19	3.75	3G

GL9371

Mix Master Shot Glass

1.75" Diameter x 2.75" H

Promote your party, event or venue with these shot glasses that hold up to 24 ml. (0.8 oz.) and have a weighted base.

96	144	288	576	1152
5.80	4.54	3.20	2.77	2.65 2AB2C



Clear



GL9333

Rowbeck 450 ml. Stemless Wine Glass

2.75" Diameter x 4" H

The stemless design of the wine glass helps prevent tipping and is ideal for your favourite wine or other beverage. It holds up to 450 ml. (15 oz.).

96	144	288	576	1152
8.08	6.74	5.11	4.47	4.30 2AB2C



Clear

GL9337

Brewmaster 500 ml. Beer Stein

3" Diameter x 6" H

This traditionally shaped beer stein is made of Glass and has straight sides and a heavy patterned bottom base. Hold comfortably using the 'D' shaped handle with textured thumb rest. Holds up to 500 ml. (17 oz.).

96	144	288	576	1152
10.62	9.16	7.20	6.30	6.07 2AB2C



Clear



White

CM936

Burrard 350 ml. Coffee Mug

3.5" Diameter x 3.625" H

This new Bone China mug will quickly become your favourite. It's also a versatile gift suitable for any promotion. Includes a 'C' shaped handle, glossy finish and holds up to 350 ml. (12 oz.).

96	144	288	576	1152
7.42	6.10	4.55	3.97	3.82



White

new

CM9531

Secilia 400 ml. Mug

4.5" Diameter x 3.125" H

This simple, zen-like and elegant mug offers a humble glossy white interior and exterior along with a generous capacity for your morning pick-me-up. The mug is also perfect for a hot cup of soup. Holds up to 400 ml. (13.5 oz.).

96	144	288	576	1152
7.94	6.60	4.98	4.35	4.18



White

new

CM9497

Bianca 400 ml. Square Mug

3.375" Diameter x 4.125" H

New Bone China mug with a generous 400 ml. (13.5 oz.) capacity for your morning pick-me-up. It has a unique square shape, a 'D' shaped handle and a glossy interior and exterior.

96	144	288	576	1152
7.26	5.94	4.42	3.85	3.70





# DRINKWARE

## New Bone China

new

### CM9618

Nico 385 ml. Mug with Silicone Base

3.375" Diameter x 4.25" H

The brightly coloured Silicone base of this mug helps protect surfaces and also provides non-slip safety. The mug is New Bone China and holds up to 385 ml. (13 oz.). The interior and exterior are glossy with a 'D' shaped handle.

96	144	288	576	1152
8.40	7.02	5.35	4.67	4.48 2AB2C



Red

Black



Royal Blue

Lime Green

Orange

Purple

new

### CM9506

Colorway 295 ml. Mug

3.5" Diameter x 3.375" H

The Colorway mug has a colour for any type of personality. Made of the finest New Bone China material, this mug offers you 9 colour options with glossy interior and exterior. Holds up to 300 ml. (10 oz.) of your favourite beverage.

Black, Lime Green 375, Mint Green 338, Orange 021, Pantone Yellow, Process Blue, Red 485, Royal Blue 072

96	144	288	576	1152
8.74	7.36	5.64	4.92	4.73 2AB2C

Purple 267

96	144	288	576	1152
9.76	8.32	6.47	5.65	5.43 2AB2C



Purple 267

Red 485



Orange 021

Black

Mint Green 338

Royal Blue 072

Lime Green 375

Process Blue

Pantone Yellow



All White

Cobalt Blue

Lime Green

Red

Black



Black/White

CM816

325 ml. Fuzion 'C' Handle Mug

3.25" Diameter x 3.75" H

This Ceramic mug holds up to 325 ml. (11 oz.) and has a large, ergonomic 'C' handle. Make the most out of your marketing dollars!

All White

96	144	288	576	1152	
6.14	4.88	3.49	3.03	2.92	2AB2C

Colours

96	144	288	576	1152	
7.46	6.14	4.58	3.98	3.83	2AB2C



Orange

Lime Green

Red

Black

Cobalt Blue



Yellow

CM9117

Koho 350 ml. Mug with Coloured Handle

3.5" Diameter x 3.625" H

Match your logo to the interior and handle colour with this Stoneware mug that holds up to 350 ml. (12 oz.). All colours have a glossy white exterior.

96	144	288	576	1152	
7.48	6.16	4.60	4.00	3.85	2AB2C



Cobalt Blue

Red

Black



Lime Green

CM9161

Spring 350 ml. Mug

3.5" Diameter x 3.375" H

All of the colours of this Stoneware mug have a glossy white exterior. You choose the colour of glossy rim and handle to match to your logo. The mug holds up to 350 ml. (12 oz.).

96	144	288	576	1152	
7.68	6.34	4.76	4.15	3.98	2AB2C



# DRINKWARE

## Ceramic

Interior  
**SWIRL**  
Design



### CM9503

Café Bien 400 ml. Two-Tone Mug

3.75" Diameter x 4.25" H

A swirl of delight! Our Café Bien Stoneware mug features a beautiful two-toned interior swirl design (except white). Each mug has its own unique interior swirl as the colours whirl their way from top to bottom. The colours absolutely pop, and the 'C' shaped handle fits comfortably in your hand.

96	144	288	576	1152
8.24	6.88	5.22	4.55	4.37



Blue



Red



Orange



Lime Green



Royal Blue



White

### CM8414

450 ml. 'C' Handle Two-Tone Mug

3.625" Diameter x 4" H

This Ceramic mug with glossy finish holds up to 450 ml. (15 oz.) and has a large, ergonomic 'C' shaped handle. Interior is coloured with a white exterior. A popular trade show giveaway!

All White

96	144	288	576	1152
8.28	6.92	5.25	4.58	4.40

Colours

96	144	288	576	1152
8.98	7.58	5.84	5.10	4.90



Black



Cobalt Blue



Red



All White

### CM9275

Beach House 350 ml. Speckled Mug

3.5" Diameter x 3.375" H

A practical and useful Stoneware mug that will be seen every day. The exterior is glossy with coloured speckles and rim and the interior is glossy white. Holds up to 350 ml. (12 oz.) and has a 'C' shaped handle.

96	144	288	576	1152
8.34	6.98	5.31	4.63	4.45



Red



Black



Royal Blue

## Ceramic

## DRINKWARE



### CM9428

Caspian 450 ml. Mug

3.25" Diameter x 5" H

The exterior of this Stoneware mug is white with a matte finish and the interior is glossy with your choice of colour. The mug holds up to 450 ml. (15 oz.).

96	144	288	576	1152
8.50	7.12	5.44	4.75	4.57



Cobalt Blue



new

### CM9444

Café Lisse 425 ml. Mug

4" Diameter x 3.5" H

Match your logo to the coloured interior of this Stoneware mug that holds up to 425 ml. (14.4 oz.). Features a glossy exterior and interior with a large 'C' shaped handle and a wide mouth opening.

96	144	288	576	1152
8.52	7.14	5.45	4.77	4.58



Red



### CM9057

Bowery 400 ml. Mug

3.5" Diameter x 3.5" H

A great mug for conferences and event giveaways as well as coffee shops. It is made from Stoneware and holds up to 400 ml. (13.5 oz.). The exterior is white with a matte finish, you get your choice of glossy coloured interior and there is a 'D' shaped comfort handle.

96	144	288	576	1152
8.56	7.18	5.49	4.80	4.62



Royal Blue



# DRINKWARE

## Ceramic



### CM9058

Parsumi Two-Tone 416 ml. Mug

4.125" Diameter x 3.5" H

The exterior of this Stoneware mug has a matte finish and the interior is glossy. Includes a 'C' shaped handle and holds up to 416 ml. (14 oz.).

96	144	288	576	1152
8.98	7.58	5.84	5.10	4.90



Black/Grey



Red



### CM9359

Siena 500 ml. Bowl

4.75" Diameter x 2.5" H

Use this Stoneware bowl for your soup, chili or cereal. The bowls can be stacked for easy storage and holds up to 500 ml. (17 oz.). Matte exterior with matching coloured glossy interior.

96	144	288	576	1152
9.24	7.82	6.04	5.27	5.07



Cobalt Blue



White



Black

### CM1308

Fuzion Halo 385 ml. Mug

3.75" Diameter x 4" H

This extra-large Ceramic mug features a sturdy 'D' shaped handle with matching coloured rim and base. Holds up to 385 ml. (13 oz.).

96	144	288	576	1152
9.34	7.92	6.13	5.35	5.15



Red



Black



Green



Cobalt Blue

## Ceramic

## DRINKWARE



Cobalt Blue



Orange



White



Red



Black



### CM9038

Café Craft 400 ml. Mug

3.25" Diameter x 4.5" H

This mug has a large and comfortable 'C' shaped handle. It is made from Stoneware and has a white matte exterior finish with your choice of glossy coloured interior. Holds up to 400 ml. (13 oz.).

96	144	288	576	1152
9.46	8.04	6.24	5.45	5.23



Black



Red

Black  
**MATTE**  
Exterior



### CM2414

C-Tone 450 ml. 'C' Handle Two-Tone Mug

3.5" Diameter x 4" H

The exterior of this Ceramic mug has a black matte finish and you choose the colour of the glossy interior. It has the same ergonomically designed handle as our CM8414 'C' handle mug. Holds up to 450 ml. (15 oz.).

96	144	288	576	1152
9.62	8.20	6.36	5.57	5.35



Red



Cobalt Blue



White

Uniquely  
**SHAPED**  
Handle



### CM9418

Aral 350 ml. Coffee Mug

3.5" Diameter x 4" H

The uniquely shaped handle of this Stoneware mug is extremely comfortable for everyday use. All colours have a white glossy interior and you choose the matte exterior colour. Holds up to 350 ml. (12 oz.).

96	144	288	576	1152
9.70	8.26	6.42	5.62	5.40



# DRINKWARE

## Ceramic

### CM151

Fuzion Kona 444 ml. Mug

3.75" Diameter x 4.25" H

Extra large capacity Ceramic mug is perfect for your favourite hot beverage. Holds up to 444 ml. (15 oz.).

All White

96	144	288	576	1152
9.76	8.32	6.47	5.65	5.43
2AB2C				

Colours

96	144	288	576	1152
10.54	9.06	7.11	6.22	5.98
2AB2C				



Cobalt Blue



All White



Black

### CM9373

Early Riser 450 ml. Coffee Mug

3.75" Diameter x 4" H

The 'D' shaped handle on this Stoneware mug provides a comfortable grip. Holds up to 450 ml. (15 oz.) and has glossy interior and exterior.

96	144	288	576	1152
9.86	8.42	6.56	5.73	5.52
2AB2C				



Black/Red



White/Cobalt Blue



Black/Cobalt Blue



Black/White



White/Black



White/Red

new

### CM9502

Avalon 400 ml. Soup Mug

5.125" Diameter x 3" H

This 400 ml. (13.5 oz.) Stoneware mug is great for soup, chili and extra-large cups of coffee, tea and hot chocolate. It has a square bottom, a glossy coloured interior and a matte white exterior with a white spoon that stores in the 'C' shaped handle.

96	144	288	576	1152
10.28	8.82	6.91	6.05	5.82
2AB2C				



Cobalt Blue



Black



Lime Green



Red



White

## Ceramic

## DRINKWARE



Red/White

All White

Royal Blue/White



Black/White

Lime Green/White



Black/Red

### CM8490

591 ml. Barrel Mug

3.5" Diameter x 4.25" H

An extra-large mug for your extra-large beverage! It is made of Ceramic and hold up to 591 ml. (20 oz.). It has a matte exterior with a glossy interior. Features an ergonomic 'C' handle.

All White

96	144	288	576	1152
10.54	9.06	7.11	6.22	5.98

Colours

96	144	288	576	1152
11.02	9.52	7.51	6.57	6.32



Red

Black



White



Cobalt Blue

### CM9328

Piccolo 350 ml. Coffee Mug with Lid

3.75" Diameter x 3.75" H

The lid on this Stoneware mug helps keep your beverage hot and can also be used as a coaster. You get to choose the colour of glossy exterior and matching lid. Includes 'D' shaped handle, glossy white interior and holds up to 350 ml. (12 oz.).

96	144	288	576	1152
10.28	8.82	6.91	6.05	5.82



White



Black



Red

### CM6990

Soup-er 500 ml. Soup Mug

5" W x 4" H x 5" D

This Ceramic mug is ideal for your favourite soup. The airtight PE lid helps keep the contents warm and prevents spilling. Holds up to 500 ml. (17 oz.) and is freezer and dishwasher safe. Individually retail packaged.

96	144	288	576	1152
12.48	10.92	8.73	7.65	7.35





DRINKWARE

Ceramic

new

DA9524

Charleston 380 ml. Mug  
with Silicone Lid

3.25" Diameter x 4.25" H

The removable Silicone lid for this mug resembles dripping paint. The Porcelain mug has a white glossy interior and exterior and you get to choose the colour of lid that can also be used as a coaster. The mug holds up to 380 ml. (13 oz.).

50	250	500	1000	
12.58	10.16	8.92	8.58	AB2C



Orange

Red

Royal Blue

Black

Lime Green

DA8751

Champ 295 ml. Golf Ball Dimpled Mug

3.5" Diameter x 5.25" H

The outside of this Porcelain mug has a glossy finish and is dimpled just like a golf ball. It is double walled and holds up to 295 ml. (10 oz.). The top lid is PP and has a slide closure. Individually boxed.

50	250	500	1000	
12.66	10.24	8.98	8.65	AB2C



White

The outside is dimpled just like a golf ball

DA8787

Bamboo Chic 444 ml. Mug

3.75" Diameter x 4.25" H

You can use the environmentally friendly Bamboo lid to keep your beverage warm and then use it as a coaster. The mug is made from Ceramic and has a glossy finish. Holds up to 444 ml. (15 oz.). Individually boxed.

50	250	500	1000	
12.90	10.45	9.17	8.82	AB2C



Bamboo lid can be used as a coaster



White/Brown

Ceramic

DRINKWARE



Black

Red

Royal Blue



Lime Green

new

DA9577

Colombo 440 ml. Mug  
with Tea Strainer

3.25" Diameter x 4.75" H

This glossy white Porcelain mug has a basket weave texture on the outside, a removable Stainless Steel infuser and a Silicone lid. Just place the infuser in your mug with loose tea leaves for steeping and use the lid to help keep your beverage hot. Holds up to 440 ml. (15 oz.).

50	250	500	1000	
17.92	14.80	13.00	12.50	AB2C



Black



White

new

DA9516

Volay 340 ml. Bottle  
with Bamboo Lid

2.625" Diameter x 7.625" H

This chic double walled Stoneware bottle boasts smooth, glossy finishes on the inside and outside along with a bamboo lid to top off the experience. Keeps your beverage hot for up to 2 hours and cold for up to 4 hours. Holds up to 340 ml. (11.5 oz.). Individually boxed.

50	250	500	1000	
18.34	15.16	13.32	12.82	AB2C



DRINKWARE

Ceramic

DA8346

328 ml. Medi Mug with Sleeve

3.5" Diameter x 6" H

This is our popular medi mug with the addition of a vinyl sleeve to protect your hand. The sleeve is removable for easy cleaning. The mug holds up to 328 ml. (11 oz.). Mug has a glossy finish. Includes a Silicone lid. Individually boxed.

All mugs have a choice of, Black, Lime Green, Matte Blue, Red, lid and sleeve

50	250	500	1000	
11.66	9.38	8.23	7.93	AB2C



DA8791/DA7272

500 ml. Mug with Sleeve

3.5" Diameter x 7" H

A protective Vinyl sleeve has been added to this large Ceramic mug to keep your hand cool. The mug is Ceramic with a glossy finish, is double walled, holds up to 500 ml. (17 oz.) and includes a Silicone sleeve. Individually boxed.

All mugs have a choice of, Black, Brown, Lime Green, Matte Blue, Red, Royal Blue (not shown) or White (not shown) lid and sleeve

DA8791 Black Mug

50	250	500	1000	
13.42	10.91	9.58	9.23	AB2C

DA7272 White Mug

50	250	500	1000	
13.42	10.91	9.58	9.23	AB2C



DA8791

DA7272



Ceramic

DA8713

DA7301



DA8299



Lime Green

Royal Blue

Navy Blue



Red



## DRINKWARE

### DA7301/DA8713

500 ml. Mug

3.5" Diameter x 7" H

This is a large Ceramic mug with a glossy finish and Silicone lid. Holds up to 500 ml. (17 oz.). It is reusable and double walled. Individually boxed.

Both mugs have a choice of, Black, Brown, Lime Green, Matte Blue, Red, Royal Blue or White (not shown) lid

DA8713 Black Mug

50	250	500	1000	
12.74	10.33	9.07	8.73	AB2C

DA7301 White Mug

50	250	500	1000	
12.74	10.33	9.07	8.73	AB2C



### DA8299

328 ml. Glossy Medi Mug

3.5" Diameter x 6" H

This Ceramic mug with a glossy finish looks just like a paper cup, but can be used over and over again. It holds up to 328 ml. (11 oz.), is double walled and includes a Silicone lid. Individually boxed.

Mug has a choice of, Black, Brown, Lime Green, Matte Blue, Red, Royal Blue or White (not shown) lid

50	250	500	1000	
10.96	8.78	7.72	7.43	AB2C



### DA7437

500 ml. NYC Cup with Neoprene Sleeve

3.75" Diameter x 6.25" H

Lightweight 3mm Neoprene sleeves fits onto this PP cup and lid to help protect your hands. The mug is single walled with a snap-on lid and looks just like a paper cup, but it's reusable. Cups packed into each other and stacked together; sleeves bulk packed separately. Cup holds up to 500 ml. (17 oz.).

150	250	500	1000	2500	
3.74	3.13	2.70	2.58	2.45	AB3C





GB8700

Two Part Ceramic Mug Box

5.625" W x 4.25" H x 4.5" D

Present your mug in this two-part black/white gift box. It is made from corrugated Cardboard. For imprinted orders only, your mug will be packed in this box. See website for mugs that are available with this box. Imprinting on box not available.

96  
3.30 E



Black/White

S6425/S6525

Ceramic Mug Box

For select ceramic mugs order S6425 or S6525 mug boxes and your imprinted mug will be packed inside. It is made from corrugated Cardboard and offers extra protection. See website for mugs that are available with this box. Imprinting on box not available.

96  
1.15 E



White

new

S9576

Double Ceramic Mug Box

Pack your set of two mugs into this corrugated Cardboard paper box for extra protection. The black matte finish helps present your gift in style. See website for mugs that are available with this box. Imprinting on box not available.

48  
2.86 E



Black

## BLACK LABEL

Create Stunning and memorable gift experiences with Debco's Black Label by Design. This is your opportunity to craft a gift set of your own design that is unique to you and your special recipient. Black Label by Design allows you to say thank you in a personal, stylish, and elegant way - one they are sure to remember for years to come.

And it's as easy as 1-2-3.

- 1) Choose your first product
- 2) Choose your second product
- 3) Choose your box size

Your branding or special message will be gorgeously imprinted on each of your selected products, including the chic black gift box. A foam inlay is custom die-cut to cradle your products, making for an exclusive presentation that is complimented perfectly by the included silver bow. Black Label by Design. Gift sets as unique as you are.

Please see [www.debco.com/bydesign](http://www.debco.com/bydesign) for more information.



### PK7000

Black Label by Design Large Box

10" W x 11.5" H x 4" D (box dimensions)

50

11.35 E

Pricing includes box only. Contents are extra.



### PK6000

Black Label by Design Medium Box

7.5" W x 11.5" H x 4" D (box dimensions)

50

9.21 E

Pricing includes box only. Contents are extra.



### PK8000

Black Label by Design Small Box

7.5" W x 6.5" H x 3.5" D (box dimensions)

50

7.21 E

Pricing includes box only. Contents are extra.



new

PK6003

Ice Rocks Anchor Hocking® Glass Gift Set

This gift set includes two 370 ml. (12.5 oz.) Double Old Fashioned Anchor Hocking® glasses and six Soapstone ice rocks. Ice rocks will chill your beverage without diluting it and are reusable (FDA approved). Gift boxed with ribbon.

25	75	250
43.64	40.90	34.96 2AB






PK6008

Ice Rocks Glass Gift Set

This gift set includes two unique rocking glasses with curved bottoms and six Soapstone ice rocks. The curved bottom on the glasses helps prevent the glass from falling over. Ice rocks will chill your beverage without diluting it and are reusable (FDA approved). These items are packed inside an elegant black gift box and include a silver coloured pull bow with satin finish to make the perfect bow every time! Bows come inside a clear sleeve and are packed inside the gift box.

25	75	250
43.64	40.90	34.96 2AB







PK9001

Mug with Tea Infuser Gift Set

This gift set includes white CM816 ceramic 'C' handle mug and DA9310 Nottingham 18/8 Stainless Steel tea infuser packed inside GB8700 two part black/white gift box. Just place the infuser inside the mugs for loose leaf tea steeping. The lid helps keep your tea hot and doubles as a saucer.

25	75	250
21.08	19.16	15.91 2AB





HUB PENS



Handy stylus for use with all touch screen devices

PE636

Vienna™ Stylus

new

150	250	500	1000	2500	
2.98	2.45	2.10	2.00	1.88	AB3C

Classic push action retractable with silver accents  
Convenient stylus tip  
Teardrop grippers for writing comfort  
Silver engraved imprint  
Price includes laser engraving in one location  
Individually polybagged

Available in Black or Blue ink

Pen tip retracts into stylus



Black



Light Blue



Navy Blue





HUB PENS



Red

Black



Navy Blue



Champagne

Light Blue

PE628

Vienna™ Pen

new

150	250	500	1000	2500	
2.80	2.31	1.97	1.87	1.75	AB3C

Classic push action retractable with silver accents  
Silver engraved imprint  
Price includes laser engraving in one location  
Individually polybagged

Available in Black or Blue ink

## HUB PENS



**new**

**PE682**

Sonata™ Glass

150	250	500	1000	2500	
2.24	1.82	1.53	1.45	1.35	AB3C

Deep executive colours in gloss finish  
Shining silver accents  
Sleek lines for high end appeal at a budget price  
Smooth blue writing ink  
Silver engraved imprint  
Price includes laser engraving in one location  
Individually polybagged

Available in Blue ink only

**new**

**PE687**

Sonata™

150	250	500	1000	2500	
2.32	1.89	1.60	1.52	1.42	AB3C

Shimmering fashion colours with shining silver accents  
Sleek lines for high end appeal at a budget price  
Smooth black writing ink  
Silver engraved imprint  
Price includes laser engraving in one location  
Individually polybagged

Available in Black ink only

# HUB PENS

Green



Red



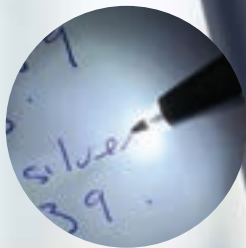
Plum



Slate



Pen tip retracts into stylus



Easy to use bright and powerful LED light

Blue



Orange



Blue



Gold



**new**

**PE677**

Sonata™ Comfort

150	250	500	1000	2500
2.92	2.40	2.05	1.95	1.83
AB3C				

This Sonata™ Executive Pen upgrade features the latest in writing enjoyment  
Rubberized finish for added comfort no matter where you grip  
Handy stylus designed for increased sensitivity with touch screen devices  
Fashion forward brights with engraved silver imprint and shining trim  
Economical price make this a perfect pen for many promotions  
Price includes laser engraving in one location  
Individually polybagged

**new**

**PE690**

Sonata™ Torch

150	250	500	1000	2500
4.74	3.98	3.43	3.28	3.12
AB3C				

Multifunction version of our Sonata™ executive pen  
Converts to a bright and powerful LED light with a double click  
Satin finish corporate colours with shining silver accents  
Sleek lines in a slightly wider barrel and smooth blue writing ink  
Silver engraved imprint  
Price includes laser engraving in one location  
Individually polybagged

HUB PENS



Handy stylus for use with all touch screen devices



Handy stylus for use with all touch screen devices



new

PE693

Textari® Comfort Stylus

150	250	500	1000	2500
3.28	2.73	2.33	2.22	2.08
AB3C				

This Textari® Stylus upgrade features the latest in writing enjoyment  
Rubberized finish for added comfort no matter where you grip  
Handy stylus designed for increased sensitivity with touch screen devices  
Engraved silver imprint and shining trim contrast boldly with matte finish  
Smooth writing blue ink  
Price includes laser engraving in one location  
Individually polybagged

new

PE699

Textari® Stylus

150	250	500	1000	2500
3.10	2.56	2.18	2.08	1.97
AB3C				

Laser engraved executive pen with stylus  
Shimmering jewel tones are set off by silver tone accents  
Elegant diamond etched grip provides writing comfort  
Silver engraved imprint  
Price includes laser engraving in one location  
Individually polybagged



# HUB PENS



Teal



Red



Purple



Blue



Black



Orange



Navy Blue



Purple



Red



White



Yellow



Pink



Green



Sky Blue

**new**

**PE411**

Mardi Gras®

250	500	1000	2500	5000	
0.84	0.67	0.62	0.55	0.52	B4C

Classic Mardi Gras® with jumbo barrel and rubber grip  
Hot brilliant colours with black and silver accents  
Guaranteed ultrasmooth writing cartridge  
Bulk packed  
Set up charge \$22.50 (G)

Available in Plastic, Plastic

**new**

**PE412**

Mardi Gras® Jubilee

250	500	1000	2500	5000	
0.84	0.67	0.62	0.55	0.52	B4C

A bold, colourful version of the Mardi Gras® line  
Clean white jumbo barrel with bold accent colours and rubber grips  
Guaranteed ultrasmooth writing cartridge  
Bulk packed  
Set up charge \$22.50 (G)

Available in Plastic, Plastic

# HUB PENS



Grey



Red



Dark Blue



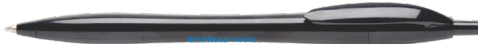
Yellow



Green



Pink



Black



Lime Green



Sky Blue



Dark Green



Black



Sky Blue



Orange



Red



Purple

new

PE587

Maxglide Click® Corporate

250	500	1000	2500	5000	
0.98	0.80	0.75	0.68	0.65	B4C

Click retractable with patented MaxGlide® hybrid ink  
Air cushioned rubber grip adds to writing ease  
Translucent black barrel contrasts with corporate trim colours  
Bulk packed  
Set up charge \$22.50 (G)

new

PE588

Maxglide Click® Tropical

250	500	1000	2500	5000	
0.98	0.80	0.75	0.68	0.65	B4C

Click retractable with patented MaxGlide® hybrid ink  
Air cushioned rubber grip adds to writing ease  
Translucent black barrel contrasts with tropical trim colours  
Bulk packed  
Set up charge \$22.50 (G)

new

PE329

Javalina® Midnight

250	500	1000	2500	5000	
0.76	0.60	0.55	0.48	0.45	B4C

Glossy black Javalina® with vibrant coloured trim  
Slim line hourglass shape provides writing comfort  
Guaranteed ultrasmooth writing cartridge  
Bulk packed  
Set up charge \$22.50 (G)

Debco has added floor mats to its array of product solutions by partnering with renowned supplier, Logo Mats. Offering a variety of best-selling indoor and outdoor options, complete with full-colour decorating capabilities, we've got the perfect floor mat to suit your needs. Now you can deal in Canadian dollars, avoid the brokerage fees, as well as the transit costs and lead-times, by using our Canadian FOB point. Pick from a large assortment of sizes and even custom shapes to make the perfect impression.

High Traffic, Indoor and Outdoor Applications



Mat Surface Detail

LM2381

Waterhog™ Impressions HD



Size	Finished Size (Fashion)	Finished Size (Rubber)	Weight	Qty 1	Qty 2	Qty 6	Qty 12	Qty 26
2' x 3'	35" x 22"	37" x 24"	5 lbs.	564.95	315.62	293.08	226.28	144.30
3' x 4'	35" x 45"	37" x 47"	7 lbs.	607.27	338.99	314.78	262.28	249.19
3' x 5'	35" x 59"	37" x 61"	11 lbs.	635.50	416.67	386.91	321.29	308.20
3' x 10'	35" x 118"	37" x 120"	20 lbs.	1,045.05	797.91	740.92	642.50	609.81
3' x 12'	35" x 144"	37" x 146"	23 lbs.	1,232.78	1,084.16	1,006.72	947.39	924.27
3' x 16'	35" x 192"	37" x 194"	29 lbs.	1,800.86	1,595.13	1,481.19	1,406.04	1,374.99
3' x 20'	35" x 239"	37" x 241"	36 lbs.	2,124.61	1,901.91	1,766.06	1,681.97	1,646.41
4' x 6'	45" x 69"	47" x 71"	17 lbs.	812.04	621.41	577.02	485.22	465.51
4' x 8'	45" x 96"	47" x 98"	23 lbs.	1,228.64	925.00	858.93	714.74	681.91
6' x 10'	70" x 119"	72" x 123"	36 lbs.	1,828.79	1,683.54	1,563.28	1,391.49	1,301.89
6' x 12'	70" x 144"	72" x 146"	44 lbs.	2,082.93	1,962.89	1,822.68	1,547.35	1,468.64
6' x 16'	70" x 192"	72" x 194"	58 lbs.	2,939.68	2,674.08	2,483.07	2,372.06	2,316.76
6' x 20'	70" x 239"	72" x 241"	72 lbs.	3,517.03	3,213.47	2,983.94	2,855.15	2,790.06

NO SET-UP FEES!  
NO ART FEES!

- State of the art digital printing.
- Treated with StainStopper™.
- Easy to Clean! Vacuum, hose off or steam clean.
- Absorbs up to 1.5 gallons of water per square yard.
- For indoor/outdoor use in covered areas. Not UV resistant.
- All mats have 3-5% size variance.
- FOB Vaughan, Ontario
- See website for colour palette

MAT SPECIFICATIONS

- Overall Mat Thickness:** 5/16"
- Mat Surface:** Polyester
- Carpet Weight:** 30 oz/sq yd
- Mat Borders:** Nitrile Rubber
- Mat Backing:** Nitrile Rubber



LM3425

Floor Impressions™

new

Size	Finished Size	Max Print Area	Weight	Qty 1	Qty 2	Qty 6	Qty 12	Qty 26
18" x 24"	18" x 24"	17" x 23"	5 lbs.	251.58	155.17	144.09	131.71	126.09
2' x 3'	22" x 34"	21" x 33"	6 lbs.	317.39	207.38	192.57	173.25	161.98
3' x 4'	34" x 46"	33" x 45"	13 lbs.	346.04	269.93	250.65	215.58	211.27
3' x 5'	34" x 58"	33" x 57"	16 lbs.	403.84	300.80	279.32	247.52	242.57
3' x 8'	34" x 94"	33" x 93"	24 lbs.	692.08	539.82	501.26	431.12	422.55
3' x 10'	34" x 118"	33" x 117"	32 lbs.	865.13	674.80	626.60	538.93	528.15
4' x 6'	46" x 69"	45" x 68"	24 lbs.	516.07	441.95	410.38	383.35	364.18

NO SET-UP FEES!  
NO ART FEES!

- Available with standard "diamond" pattern or an optional "smooth" surface.
- Photographic quality logos.
- Logo printed within 1/2" of the rubber borders.
- Diamond surface pattern offers superior traction.
- UV, chemical, and oil resistant.
- Pantone™ colour matching available for a one time fee of \$460 (G) per PMS match.
- Easy to clean! Hose off or sweep.
- All mats have 3-5% size variance.
- FOB Vaughan, Ontario
- See website for colour palette

MAT SPECIFICATIONS

**Overall Mat Thickness:** 3/16"  
**Mat Surface:** Nitrile Rubber  
**Static Dissipative**  
**Mat Borders:** Nitrile Rubber  
**Mat Backing:** Nitrile Rubber

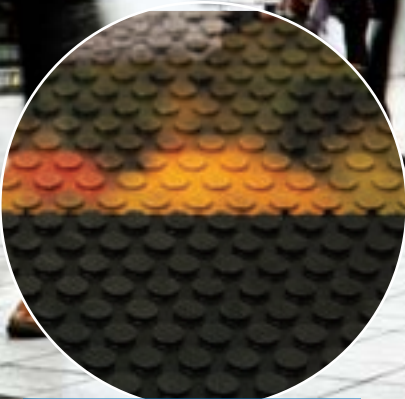
Medium Traffic, Indoor Applications



Mat Surface Detail



High Traffic, Indoor and Outdoor Applications



Mat Surface Detail

LM3559  
Superscrape™ Impressions

new

Size	Finished Size	Max Print Area	Weight	Qty 1	Qty 2	Qty 6	Qty 12	Qty 26
2.5' x 3'	29" x 34"	20" x 25"	8 lbs.	327.81	180.26	167.38	150.67	149.17
3' x 4'	34" x 45.5"	25" x 36"	11 lbs.	333.63	250.24	232.37	204.48	200.39
3' x 5'	34" x 55"	25" x 48"	14 lbs.	351.21	263.38	244.57	215.22	210.92
3' x 10'	34" x 111"	25" x 96"	28 lbs.	752.45	586.82	544.90	468.57	459.22
4' x 6'	45" x 67"	36" x 50"	22 lbs.	448.73	358.98	333.34	316.70	313.53
4' x 8'	45" x 95"	36" x 70"	31 lbs.	794.73	675.53	627.28	595.91	589.97
6' x 6'	71.5" x 72"	43" x 50"	30 lbs.	894.09	759.95	705.67	635.10	628.77
6' x 8'	71.5" x 96"	43" x 80"	46 lbs.	1,192.06	1,013.26	940.88	846.80	838.30

5C

NO SET-UP FEES!  
NO ART FEES!

- Photographic quality logos.
- Circular surface cleats for scraping and traction.
- UV, chemical, and oil resistant.
- Pantone™ colour matching available.
- Custom PMS charge \$460 (G) as a one time fee.
- Easy to clean! Hose off or sweep.
- All mats have a 3-5% size variance.
- FOB Vaughan, Ontario

MAT SPECIFICATIONS

- Overall Mat Thickness:** 1/4"
- Logo Material:** Digitally Printed Vinyl
- Mat Surface:** Nitrile Rubber, Circular Scraping Cleats
- Mat Borders:** Nitrile Rubber
- Mat Backing:** Nitrile Rubber

LM5188

new

P.O.P. Mat

Size	Finished Size	Max Print Area	Weight	Qty 1	Qty 2	Qty 6	Qty 12	Qty 26
2' x 3'	24" x 33"	24" x 33"	3 lbs.	103.73	76.76	71.28	67.40	65.48
3' x 5'	33"x 60"	33" x 60"	5 lbs.	259.01	191.67	177.98	168.34	163.54
3' x 10'	33" x 120"	33" x 120"	9 lbs.	517.98	383.31	355.93	336.69	327.08
4' x 6'	43" x 70"	43" x 70"	7 lbs.	385.64	285.36	264.98	250.65	243.50

5C

NO SET-UP FEES!  
NO ART FEES!

- Needle-punch polyester fabric surface.
- Digital Printing.
- Features 150 Standard colours to choose from.
- Logo printed to within 1/2" of the rubber borders.
- Ideal product for **Point of Purchase** applications.
- Custom PMS charge \$460 (G) as a one time fee.
- All mats have a 3-5% size variance.
- FOB Vaughan, Ontario

MAT SPECIFICATIONS

**Overall Mat Thickness:** 1/10"  
**Fabric Weight:** 8 oz/sq yd  
**Mat Surface:** Needle-punch Polyester  
**Mat Borders:** Nitrile Rubber  
**Mat Backing:** Nitrile Rubber

Medium Traffic, Point of Purchase Applications



Mat Surface Detail





LOGO MATS

High Traffic, Indoor Applications



Mat Surface Detail



LM73  
Digiprint™ HD

new

Size	Finished Size	Max Print Area	Weight	Qty 1	Qty 2	Qty 6	Qty 12	Qty 26
2' x 3'	24" x 35"	24" x 35"	3 lbs.	413.15	225.34	209.25	114.60	109.66
3' x 4'	35" x 47"	35" x 47"	6 lbs.	461.45	257.52	239.12	199.29	189.36
3' x 5'	35" x 59"	35" x 59"	9 lbs.	482.90	311.76	289.49	244.10	234.18
3' x 10'	35" x 199"	35" x 119"	16 lbs.	794.08	606.28	562.97	488.31	463.31
4' x 6'	45" x 69"	45" x 69"	12 lbs.	617.04	472.13	438.41	368.73	353.76
4' x 8'	45" x 95"	45" x 95"	17 lbs.	933.58	700.04	650.04	543.05	518.15
5' x 8'	59" x 95"	59" x 95"	20 lbs.	998.01	879.92	817.07	682.51	652.67
5' x 10'	59" x 119"	59" x 119"	27 lbs.	1,223.31	1,099.86	1,021.30	851.96	807.14
6' x 10'	68" x 119"	68" x 119"	31 lbs.	1,319.88	1,244.80	1,155.89	976.48	917.41
6' x 12'	68" x 143"	68" x 143"	40 lbs.	1,582.80	1,491.60	1,385.05	1,175.77	1,116.02

5C

NO SET-UP FEES!  
NO ART FEES!

- Revolutionary, HD digital printing.
- Features 150 Standard colours to choose from.
- 10 times the resolution of previously available products.
- Extremely plush carpet.
- Treated with StainStopper™.
- Easy to Clean! Vacuum or steam clean.
- Pantone™ colour match available for a one time fee of \$460 (G) per PMS match.
- All mats have a 3-5% size variance.
- FOB Vaughan, Ontario
- See website for colour palette

MAT SPECIFICATIONS

**Overall Mat Thickness:** 5/16"  
**Carpet Weight:** 32 oz/sq yd  
**Static Dissipative**  
**Mat Surface:** Nylon Yarn  
**Mat Borders:** SBR Rubber  
**Mat Backing:** SBR Rubber